

Split System Submittal Data



Building Life.

System: 26UW72R Indoor/Outdoor: UHW2672R/C2672R
Concealed Duct Air Conditioner

Job Name: _____
 Location: _____
 Engineer: _____
 Submitted to: _____
 Submitted by: _____
 Reference: _____

Approval: _____
 Date: _____
 Construction: _____
 Unit #: _____
 Drawing #: _____



General Data (at 230V)

Power	V/PH/Hz	230/208/1/60
Circuit Ampacity	(A)	15-30 Indoor-Outdoor
Fuse Size, Max.	(A)	15-30 Indoor-Outdoor

Compressor		DC Rotary Inverter
No. used		1
R.L. Amps - L.R.	(A)	12.9-17.5
Crankcase Heater	(W)	-

Outdoor Unit		
Fan type		Propeller
Dia. (in.) - No. Speeds		18-7/64-1
Type Drive - No. Speeds		Direct Inverter
No. Poles	(RPM)	8 - 800
No. Motors	(W)	1-90
CFM	(High)	1765
F.L. Amps	(A)	13.8

Coil Type		Aluminum Fin & Copper Pipe
Fin Type - Pipe Type		Corrugated Plate - Inner Rifled
Rows - F.P.I.		1-15.9
Face Area	(sq.ft.)	7.25
Tube Size	(in.)	3/8"

Indoor Unit		
Fan type		Centrifugal
Dia. & Length (in.) - No. Speeds		5-29/32-2
No. Speeds		3 & Auto
No. Poles	(RPM, High)	4-920
No. Motors	(W)	1-70
CFM	(Hi/Med/Lo)	670/530/460
Indoor Sound Rating	(Hi) (dB-A)	34
F.L. Amps	(A)	0.9

Coil Type		Aluminum Plate Fin & Copper Tube
Fin Type - Pipe Type		Slit Plate - Inner Rifled
Rows - F.P.I.		3-14.9
Face Area	(sq.ft.)	2.03
Tube Size	(in.)	9/32"
Drain Connection Size		(1-17/64)

Refrigerant		R410A
Lbs. - R410a (outdoor unit)		4.19
Control		Electric Expansion Valve
Connection		Flare
Line Length, Max		165
Lift Difference, Max		50 (Outdoor lower), 100 (Outdoor higher)
Line Size	(in. O.D. Discharge)	3/8"
Line Size	(in. O.D. Suction)	5/8"

Dimensions	(in.)	H x W x D
Indoor Unit	(Uncrated)	12-7/32 x 39-3/8 x 24-13/16
	(Crated)	14-3/32 x 46-7/8 x 30-13/16
Outdoor Unit	(Uncrated)	30-23/32 x 37 x 13-3/8
	(Crated)	34-31/32 x 39-31/32 x 16-3/32

Weight		Indoor	Outdoor
Net	(lbs.)	71	128
Shipping	(lbs.)	82	148
Shipping Volume	(cu.ft.)	11.8	13.0

Performance Data @ ARI Standard Conditions (230V)

Cooling		
Total Capacity	(BTU/H)	24,000 (9,500-24,000)
Sensible Capacity	(BTU/H)	14,390
Latent Capacity	(BTU/H)	9,610
SEER		14
Dehumidification	(Pints/H)	7.7
Amps	(A)	13.6/15.0
Power Inputs	(W)	2,600/2,600
Outdoor Sound Rating	(dB-A)	49

➔➔➔ Dimensions

Feature

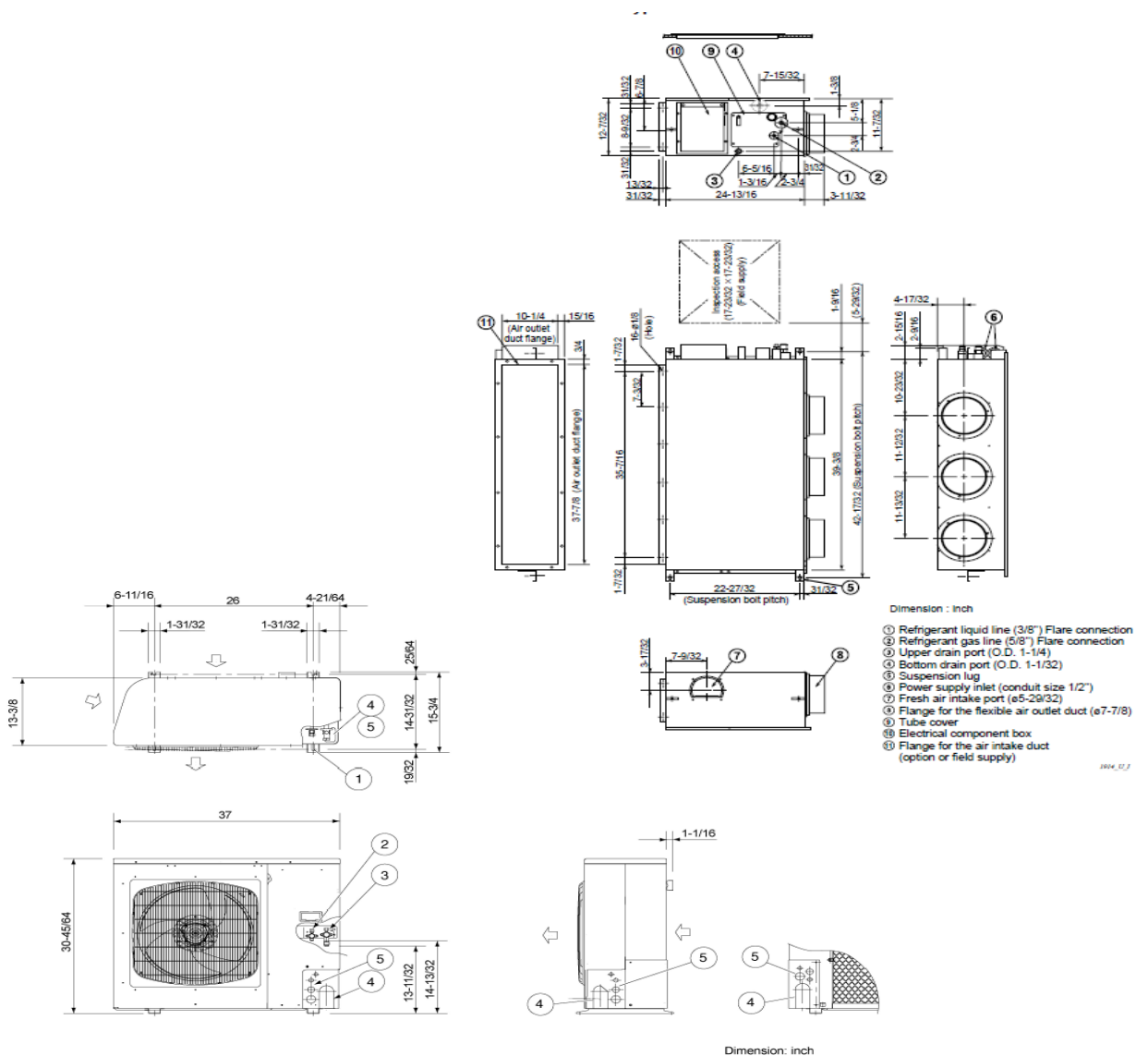
Controls		Microprocessor
Remote Controller	LCD Wired Type, Temp. Sensor Built In	IC Thermostat
Temperature Control		72HR, ON/OFF
Timer		Built-In
Night Setback		Manual
Air Louver	(Horizontal) (Vertical)	Automatic
Power Failure Automatic Restart		Built-In
Self-Diagnosis		Built-In
Air Filter		Washable, Anti-Mold

Option

Refrigerant Line Set	Available
Fresh Air Intake	N/A
Condensate Drain Pump	Standard
Wireless Remote Controller	Available
Non-Removeable Remo-con Bracket	Available

Operating Range

Cooling	Maximum	Indoor Air Intake Temp. 95F DB/71F WB	Outdoor Air Intake Temp. 109F DB
	Minimum	67F DB/57F WB	0F DB



①	Hole for anchor bolt (4-R6.5) / Anchor bolt: M10
②	Refrigerant tube joint (liquid line tube) • Flare connection 3/8 in (9.52 mm)
③	Refrigerant tube joint (gas line tube) • Flare connection 5/8 in (15.88 mm)
④	Refrigerant tubing inlet (knock-out hole)
⑤	Power supply inlet (knock-out hole ø38, ø29, ø19, ø16 mm)

